

Home	Login	My profile	Links	Forums	News	Reviews	Articles	Software	Bluetooth Guides	Submit links	Handan Discou Code

[Bluetooth USB \\$24.90](#)

· Compact Flash \$49.90. Connect wirelessly with phones, PDAs, etc.
www.deluolectronics.com

Bluetooth ActiveSync guide for HP iPAQ Windows Mobile 2003

[Articles](#) : [Wireless](#) : [Bluetooth](#), posted 11/09/2003 21:11:37 NZ

In this article we show how to configure and use your desktop or notebook as a Bluetooth ActiveSync partner for Pocket PC with Windows Mobile 2003.

This guide suits any Bluetooth model from the h19xx, h22xx, h39xx, h54xx and h55xx series running Windows M

For this we used a desktop running Windows 2000 Pro with a TDK USB Bluetooth (version 1.4.2.1) as a server. TI H3970 running Windows Mobile 2003 from HP.

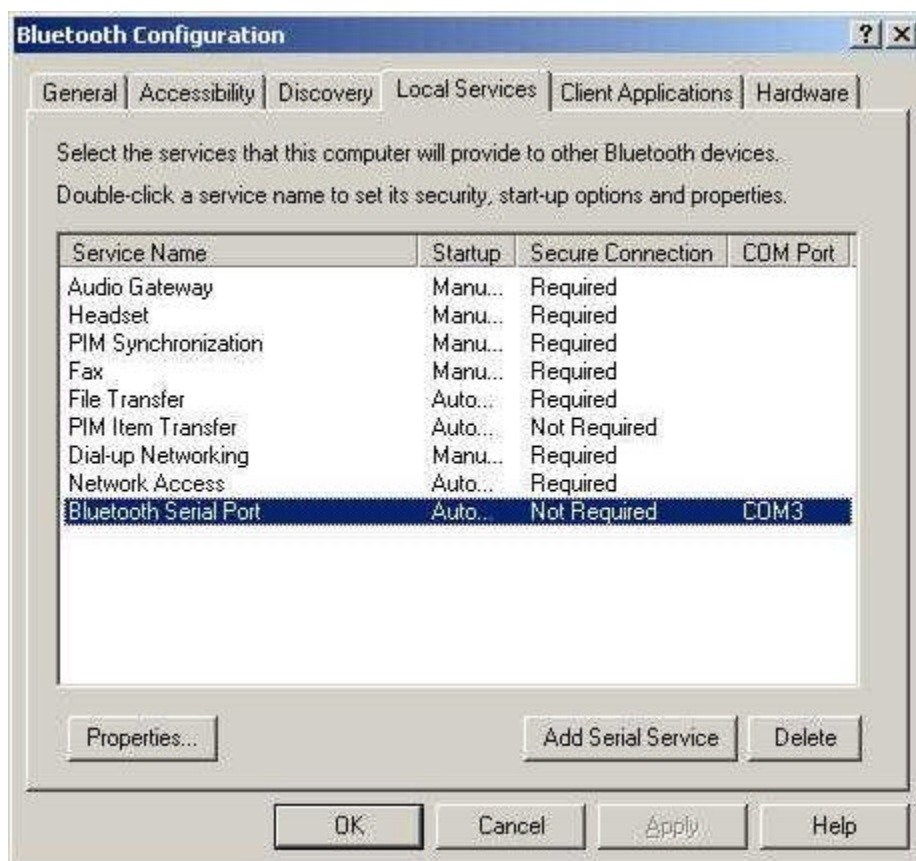
Check out other [Geekzone Bluetooth Guides](#) for more step-by-step pages!

This guide is based on Windows 2000 machines. The dialogs for Windows XP might be a little different, but the co be the same.

First, let's configure the computer that will be the server on this configuration. Start by right-clicking the Bluetooth System Tray and selecting **Advanced configuration**.



Now select the Local Service tab and take note of what COM port corresponds to the Bluetooth Serial Port.



Right-click the ActiveSync icon in the Sytem Tray and select Connection Settings.



Make sure you check the box "**Allow Serial cable or infrared connection to this COM port**" and select the CC corresponding to the Bluetooth Serial Port in the service configuration we found just before. Click the **OK** button v



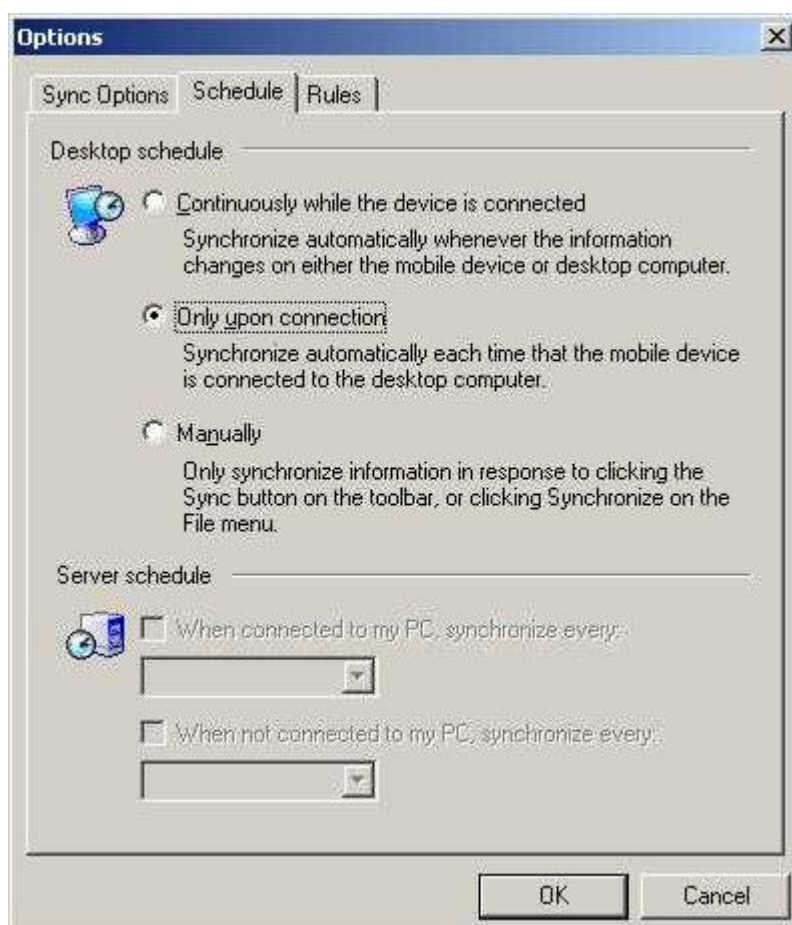
Right-click the ActiveSync icon again and select the **Open Microsoft ActiveSync** option.



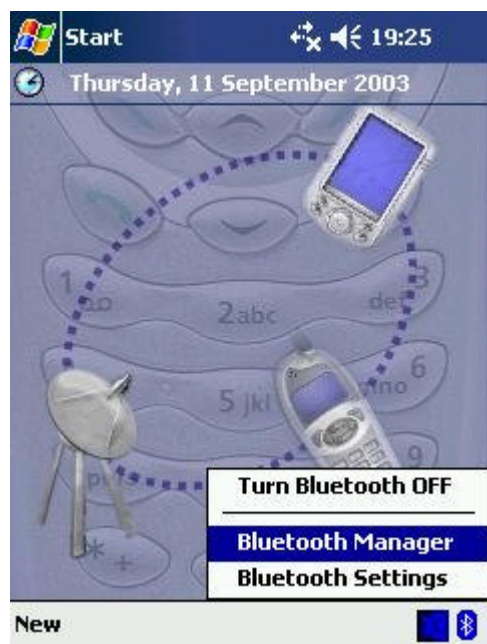
Select the **Options** button...



Here you select the schedule as "**Continuous**" or "**Upon connection**".



Now, for your iPaq configuration. Make sure the Bluetooth stack is active. From the Today screen tap the wireless bottom right and select **Bluetooth Manager**



Now tap the **New** menu and select **Connect**



Select the option **ActiveSync via Bluetooth** and tap **Next**



A couple of instruction pages will come next. Tap **Next** to go forward:



On this dialog just tap the **Device** box, to start a search.



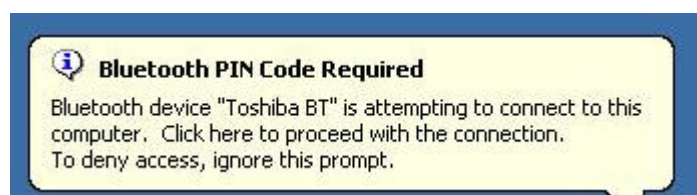
When you have your computer or laptop on the list, tap on its icon:



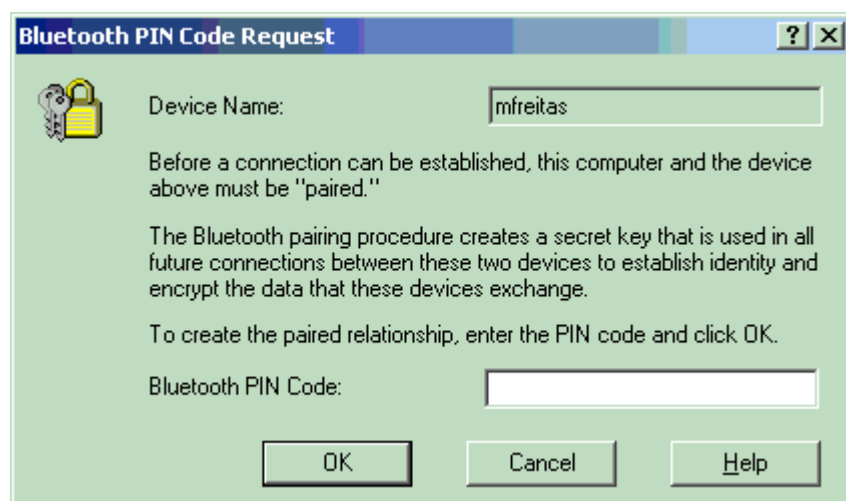
To make it an easy to access connection accept the option to create a shortcut. Shortcuts are visible on the first c
Bluetooth Manager. Tap **Finish**.



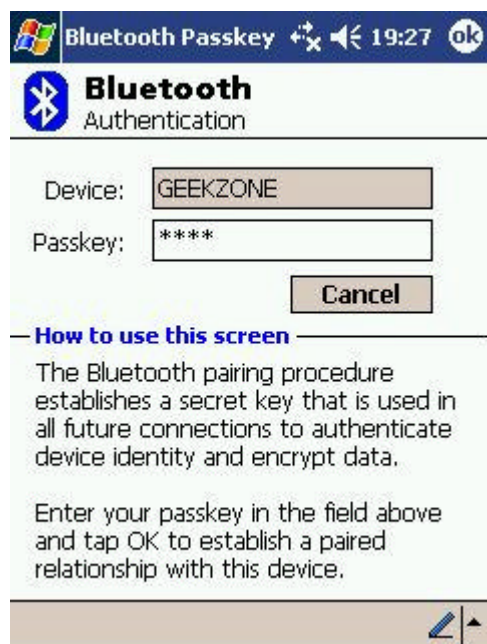
If this is the first time you are using this Pocket PC to access this computer or laptop, you'll be asked for a PIN. To create a "pairing" between these devices. On the desktop or laptop a notification bubble will show up, asking for confirmation. Click on the **Bluetooth icon** on your System tray.



Enter a PIN on your desktop. You have to be quick, because the timeout is around 15 seconds. Use a four digits n



Back on your iPaq, you'll enter the same PIN used on your computer:




The ActiveSync starts and the shortcut is created. Next time you want to start ActiveSync, simply double-tap the



More information: [content.asp?contentid=449...](#)

 Add or read [comments](#) to this article.

 [Send](#) this link as an e-mail.

 [Send](#) this link as a SMS.

Other articles related to category Articles: Wireless : Bluetooth

[Bluetooth Guide for using the i-mate Smartphone2 as a modem for your Pocket PC](#)

[Bluetooth ActiveSync Guide for i-mate Smartphone2](#)

[Bluetooth Guide for using the i-mate Smartphone2 as a modem](#)

[Bluetooth ActiveSync guide for i-mate \(O2 XDA II, QTEK 2020\)](#)

<i>More News</i>	<i>More Articles</i>	<i>More Reviews</i>
Mobile Mail for Novell GroupWise on palmOne Treo 600...	Windows Mobile and e-mail: keeping all up-to-date...	Stanaphone review...
Updated Visto Mobile Enterprise Server for OTA synchronisation...	How to connect your palmOne Zire 72 to GPRS using a Bluetooth mobile...	Bluetake i-PHONO Bluetoc headset review...
Microsoft Reader for Pocket PC now compatible with Second Edition...	How to Hotsync your palmOne Zire 72 over Bluetooth...	Aeon of Discovery for Pocl
3 megapixel camera from Samsung...	What consequences the market could expect if Dell decided to move and buy palmOne...	Chapura TurboPasswords

Comments

Sorry, this item does not accept comments.

The Bluetooth® word mark and logos are owned by the Bluetooth SIG, Inc. and any use of such marks by Geekzone is under license. Other trademarks and trade names are those of their respective owners.

